

# Standard / Junior Assembly Instructions

## What's included in the package



**\* Please check that all parts are included before assembly**



## Required tools

Phillips screwdriver x 1

10mm wrench x 2

( Can use two 10mm wrenches, but a socket wrench makes it much easier.)

Rubber Mallet or Wooden Mallet x 1

## Frame Tube list

### C Tube

Square 15x15mm  
1 Hole 8 pcs

### B Tube:

Square 15x15mm  
2 Holes on different sides 2 pcs

### I Tube

Square 15x15mm  
2 Holes on same sides 2 pcs

### L Tube

Square 15x15mm 2 pcs

### AP Tube

Square 15x15mm 6 pcs

### AO Tube

Square 25x25mm 1 pc

### Tube Binding Bar

Left, Right 2 pcs

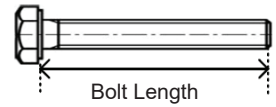
### A Tube

Square 25x25mm 2 pcs

### Cross Plate

1 pc

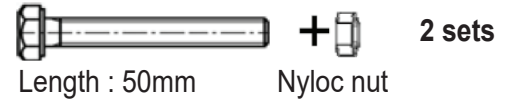
## Bolt list



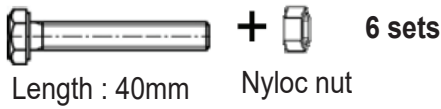
### A Bolt Set



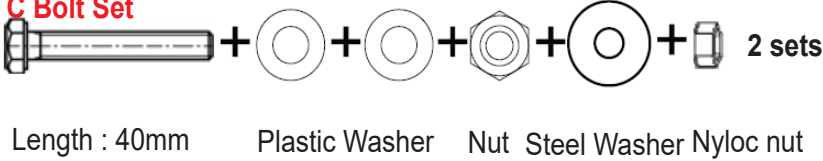
### D Bolt Set



### B Bolt Set

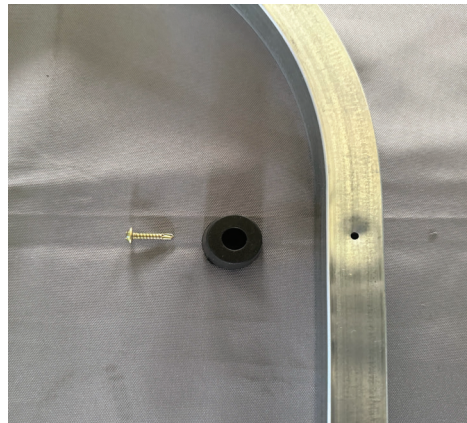
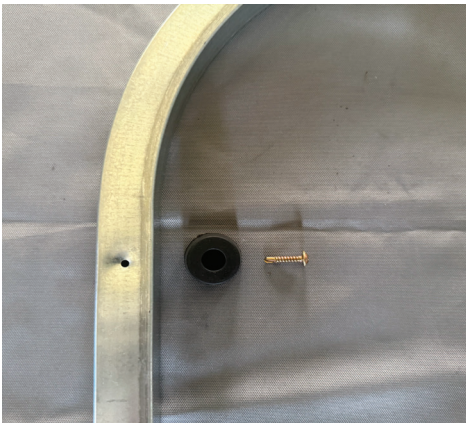


### C Bolt Set



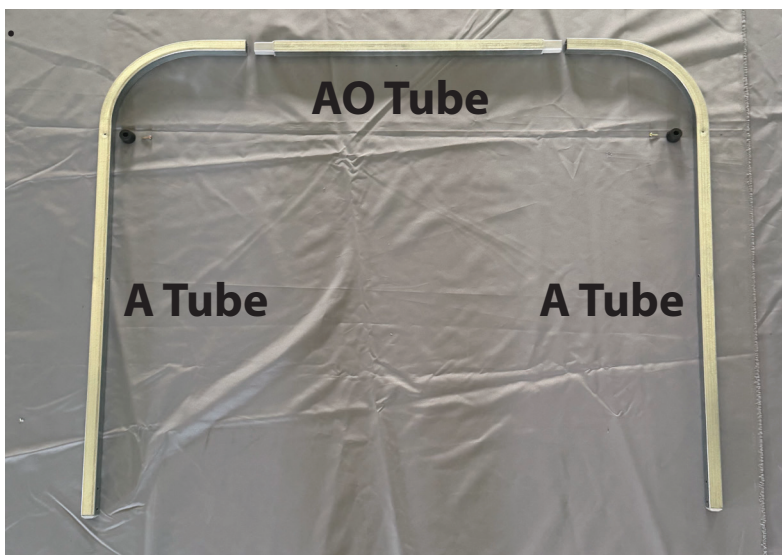
## STEP 1.1 - 1.2

Screw the **Rubber Legs** into the Left and Right **A Tubes**.



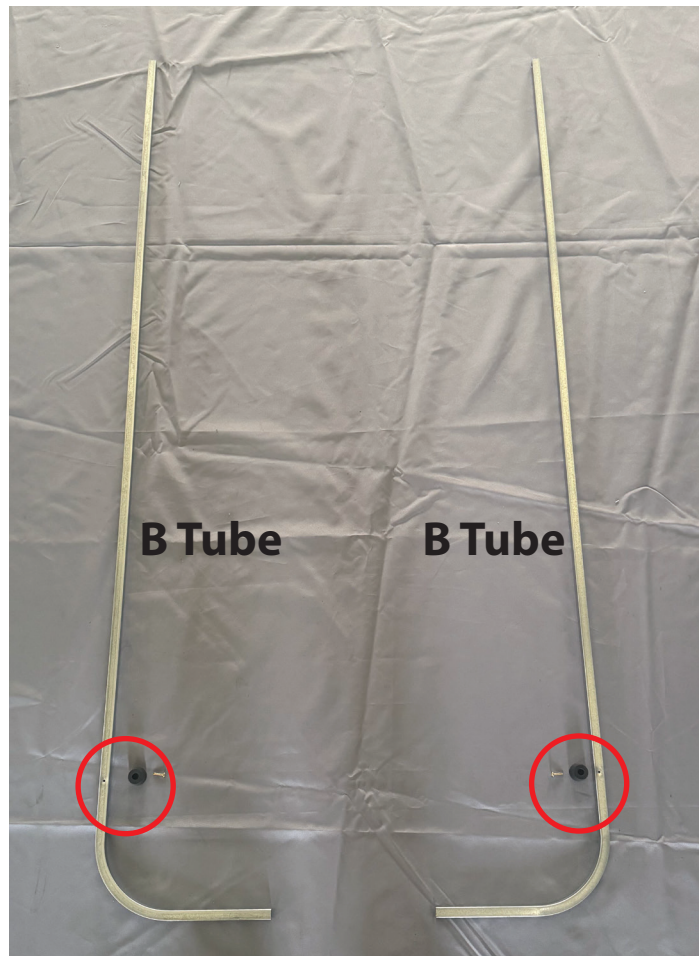
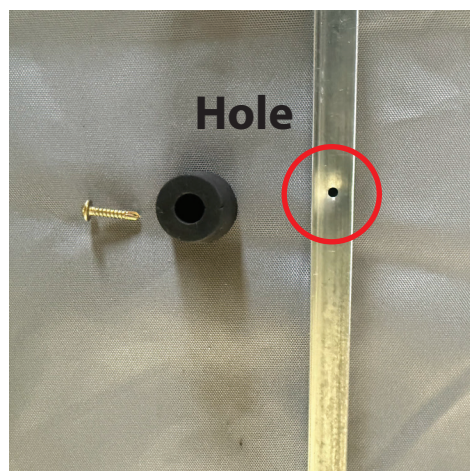
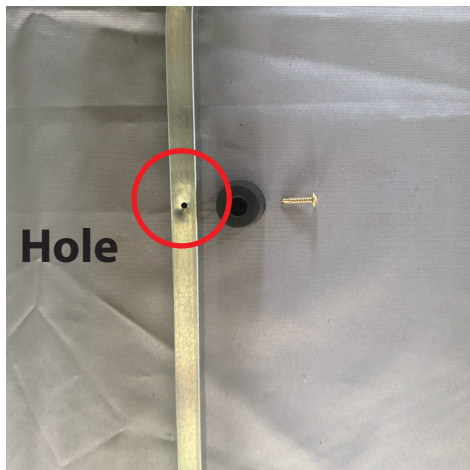
## STEP 1.3 - 1.4

Connect the **AO Tube** to the Left and Right **A Tubes**.  
Use a Rubber Mallet or Wooden Mallet if necessary.



## STEP 2.1 - 2.2

Screw the **Rubber Legs** into the Left and Right **B Tubes**.



## STEP 3.1

Place the **Cross Plate** onto the A Tube. The Cross Plate has two holes for anchor bolts to secure The Bike Shield to the floor



### STEP 3.2 - 3.5

Assemble the Left and Right **A Tubes** to the **Tube Binding Bar** using the **B Bolt Set**.

Assemble the Left and Right **B Tubes** to the **Tube Binding Bar** using the **A Bolt Set**.

**Before**



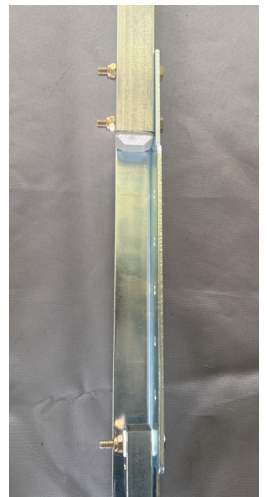
**Before**



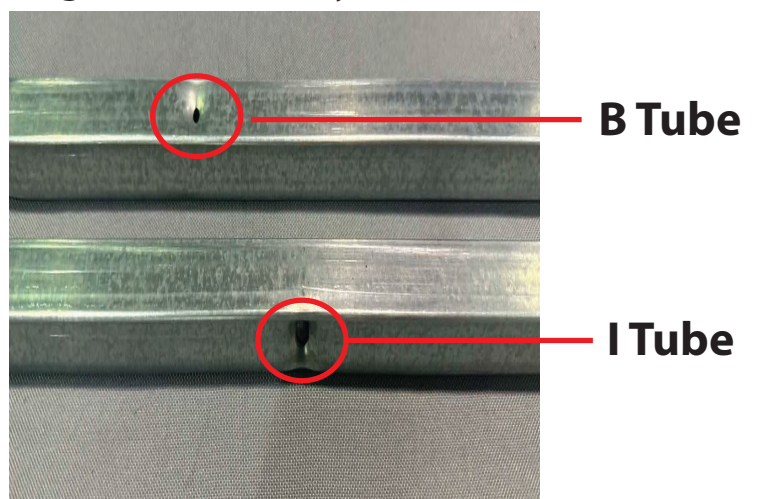
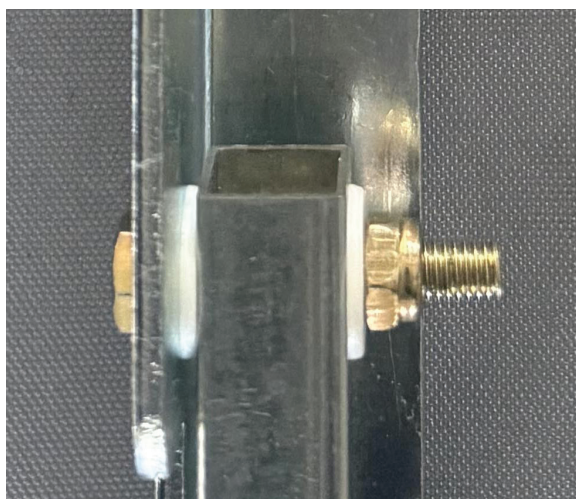
**After**



**After**

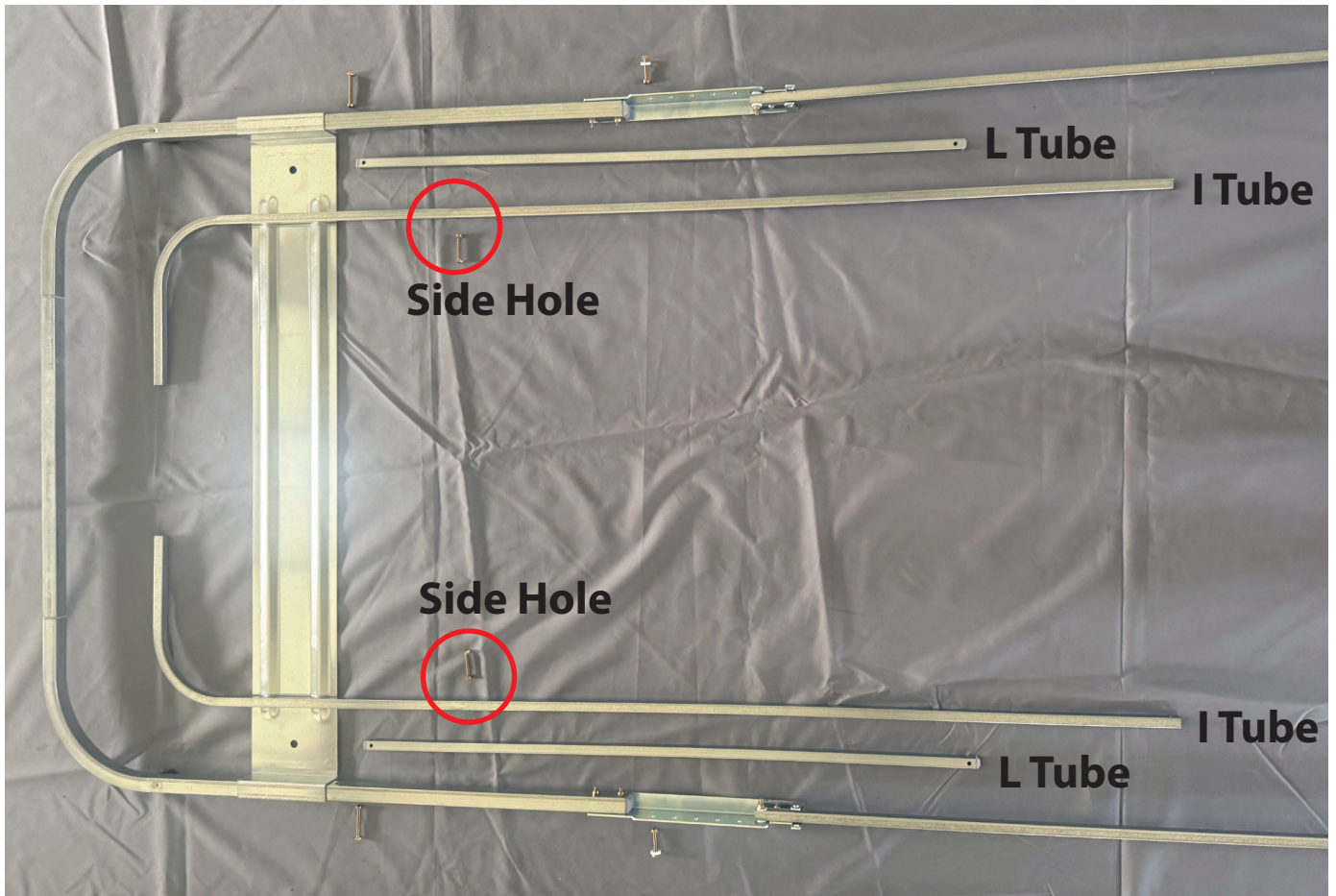


Place a **Plastic Washer** on **Each Side of the B Tube Hole**.  
Secure the B Tube and Tube Binding Bar with a Nyloc nut



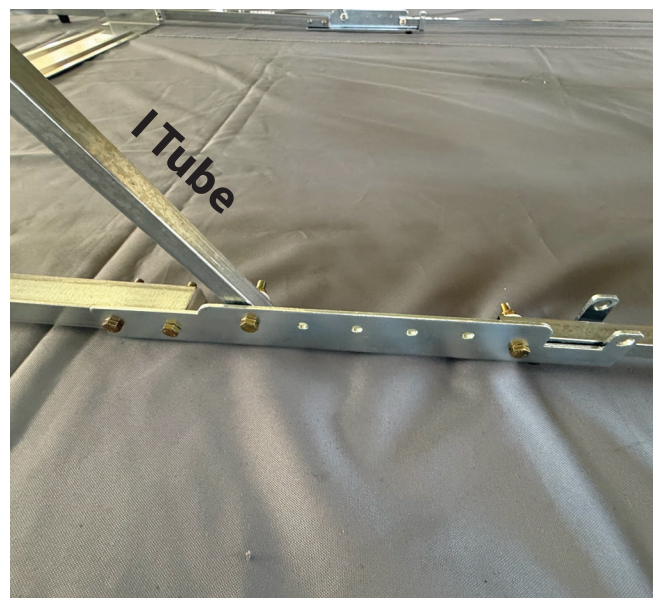
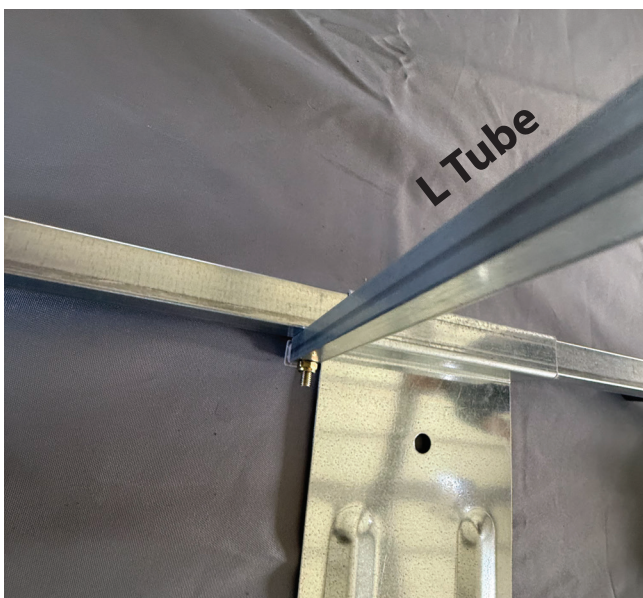
## STEP 4

Insert **all bolts from the outside toward the inside** of The Bike Shield. Assemble the **L Tube** to the **A Tube** using the **D Bolt Set**. Assemble the **I Tube** to the **Tube Binding Bar** using the **A Bolt Set**. Assemble the **I Tube** to the **L Tube** using the **B Bolt Set**, then install the Rubber Bolt Cap.



Assemble the **L Tube** to the **A Tube** using the **D Bolt Set**.

Assemble the **I Tube** to the **Tube Binding Bar** using the **A Bolt Set**.



Assemble the **I Tube** to the **L Tube** using the **B Bolt Set**.

Install the **Rubber Bolt Caps** on the Left and Right Sides.



## STEP 5

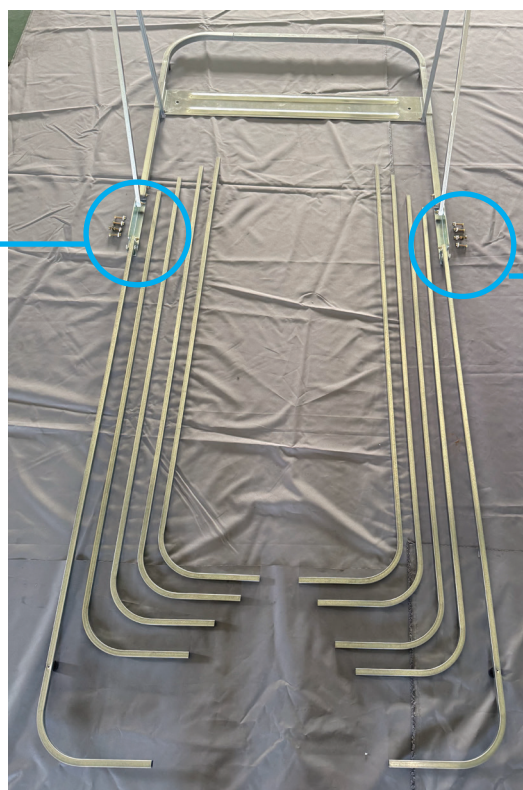
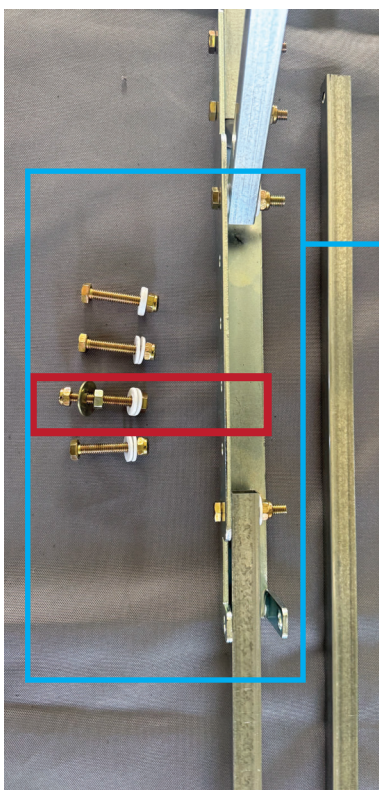
Attach the **Four C Tubes** on Each Side to the **Tube Binding Bar**. Use the **C Bolt Set** for the **Third C Tube (Left and Right)**. Insert the Bolt from the **Inside toward the Outside** of The Bike Shield.

For the C Bolt Set, **tighten only the First Nut**.

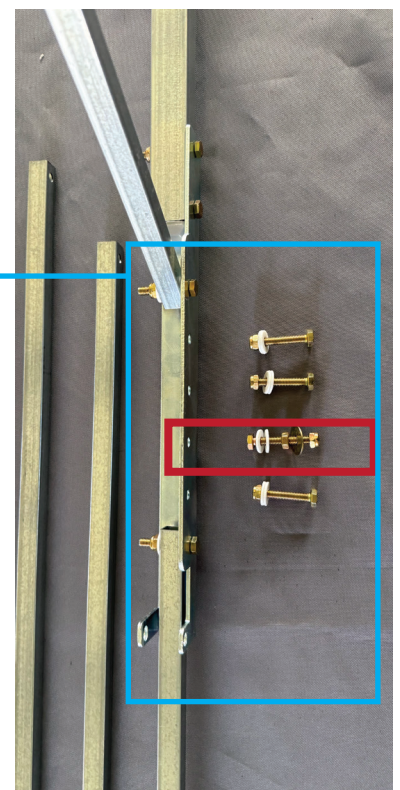
(The Steel Washer and Nyloc Nut will be installed after the Cover is placed over the frame.)

Use the **A Bolt Set** for the **Remaining C Tubes (Left and Right)**. Insert the Bolts from the **Outside toward the Inside** of The Bike Shield.

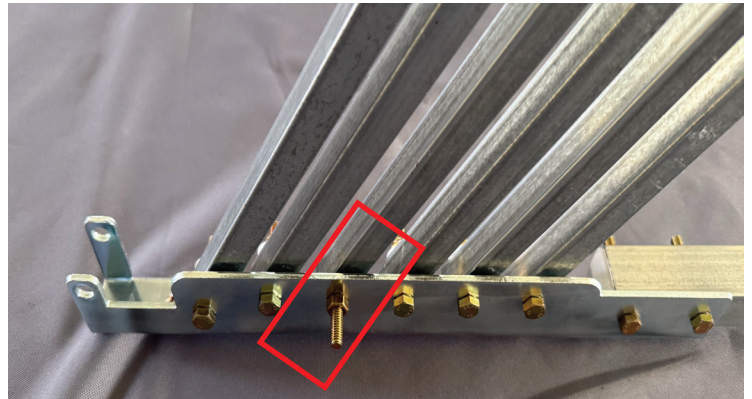
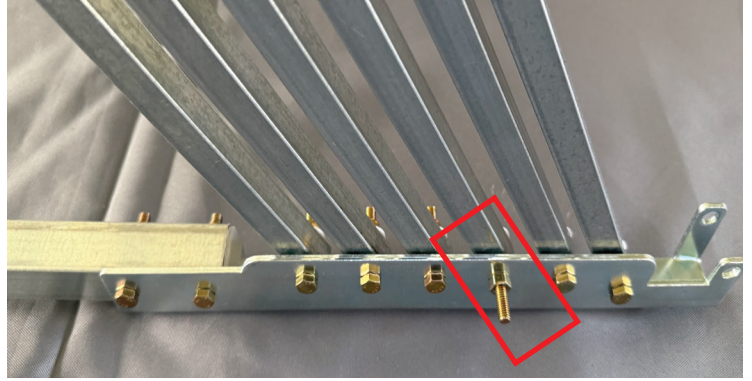
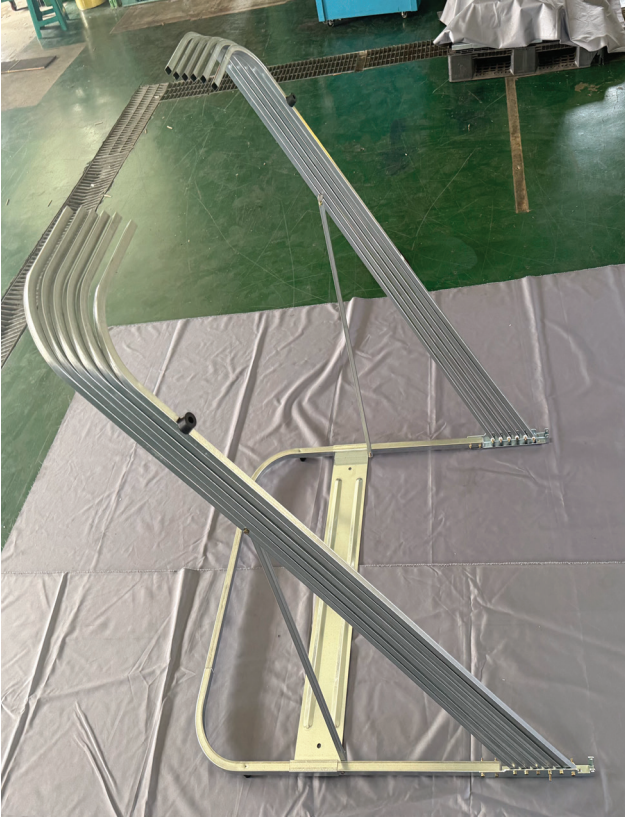
**Before**



**Before**



## STEP 5 Completed



### \* COVER ASSEMBLY \*

**Insert the frame into the cover in the following sequence:  
One pair of I tubes → Four pairs of C tubes → One pair of A tubes (FRONT bottom) → One pair of B tubes (REAR bottom)**

### STEP 6

Identify the Front and Rear Sides of the Cover.  
"FRONT" and "REAR" are marked on the Cover.

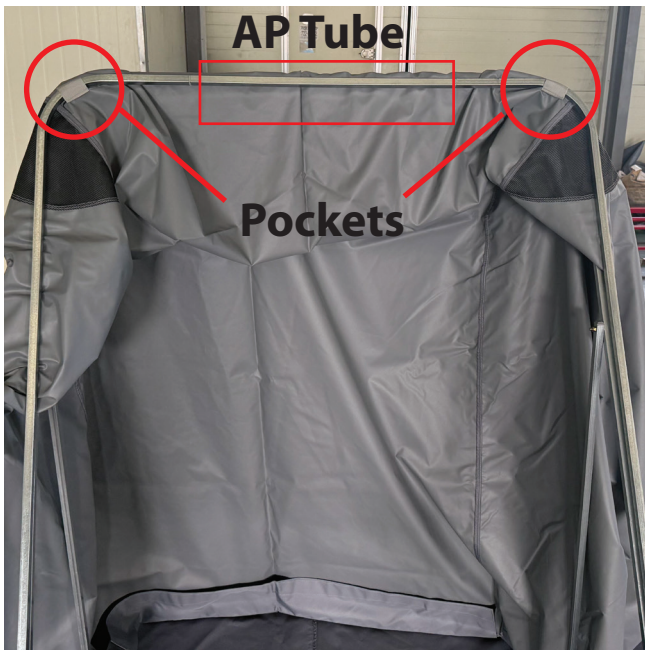




### STEP 6.1

Insert the **AP Tube** through the Center Pocket and connect it to Both Sides of the **I Tube**.

The **Center Pocket** is Located Near the Front of the Cover.



### STEP 6.2 - 6.5

Insert Each **Pair of C Tubes** through the **Left and Right Pockets** and connect them with one **AP Tube**. Repeat this process for the all 4 Pairs of C tubes.

- .



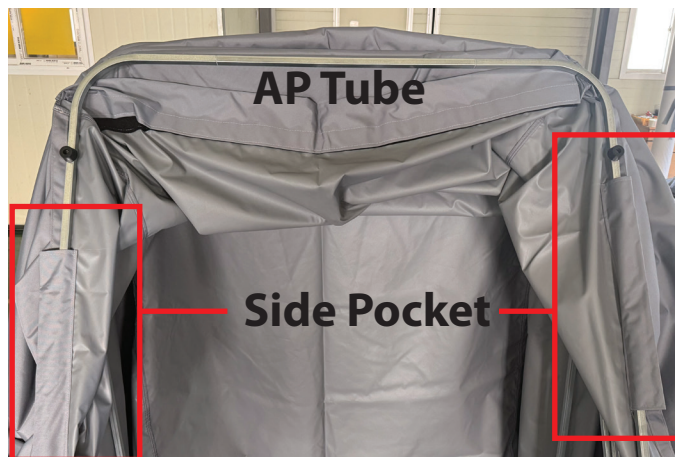
### STEP 6.6

Open the **Large Front Velcro Flap**. Wrap it around the **Connected AO Tube and A Tube**, then fasten the Velcro.

- .

## STEP 7.1 - 7.2

Insert the **B Tubes** through the **Left & Right Side Pockets** of the Cover.



## STEP 7.3

Connect the **AP Tube** to **Both Sides** of the **B Tube**.

## STEP 7.4

Open the **Large Rear Velcro Flap**, wrap it around the **Connected AP Tube and B Tube**, then fasten the Velcro



## STEP 7.5



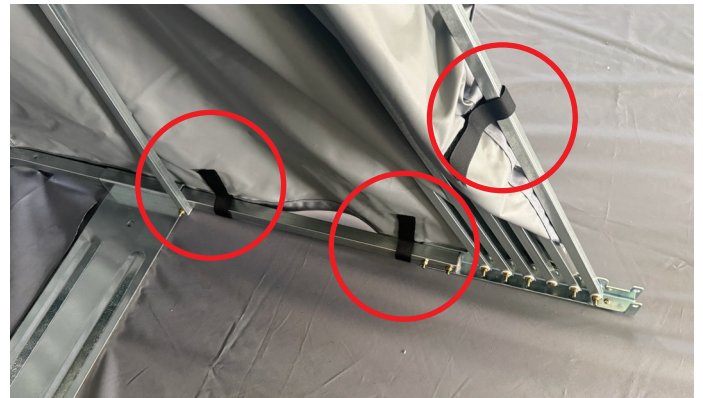
Insert the **Steel Cover Ring** onto the **C Bolt**, then install the **Steel Washer** and tighten the **Nyloc Nut**.

## Fasten the Velcro Straps.



Adjust the Front, Rear, and Side Velcro Straps for a snug fit around the frame.

You can install a Padlock on either Side of the Tube Binding Bar.



**REAR**

**FRONT**